

PELCO

by Schneider Electric

Delivering the Best Image Quality in Video Security



Endura Xpress



HD Video Appliance IT'S AS EASY AS 1-2-3

Realizing the benefits of enterprise IP video performance for your smaller installations has never been easier thanks to EnduraXpress. The logical choice for installations up to 64 cameras, the EnduraXpress network appliance delivers full HD video management, unparalleled image quality, support for Sarix and third-party cameras, robust recording and reliability second to none.

1 Easy to Install,
Even Easier
to Use

2 Predictable,
Reliable,
Affordable
Performance

3 No Special
Network
Expertise
Needed

Endura IP Video Management



Enterprise Performance FOR EVERYONE

The Endura IP Video Management System gives surveillance professionals the tools they need to safeguard people and property effectively. As an HD optimized solution, Endura is tuned to deliver the maximum benefits of megapixel cameras. That means delivering the image quality and performance required to gain better situational awareness, capture accurate video evidence and respond to events more efficiently.

What's New with Endura?

- Multicast Recording for Bandwidth Management
- Redundant Storage Pooling for Critical Infrastructure
- Seamless Matrix Migration via UDI5000-MTRX
- Support for More third-Party Cameras and Encoders
- Integration with Continuum Access Control

Sarix IM Series

Indoor, Vandal-Resistant and Environmental Mini Dome Cameras
Now Shipping



IM Series

The IM Series indoor, vandal-resistant and environmental mini domes are the most affordable way to experience the industry-leading Sarix technology.

- New environmental and vandal resistant models
- 1.3 megapixel or standard-definition (SD) models
- Discreet, compact dome camera
- Best-in-class low-light performance
- Easy installation and set up
- SureVision

Sarix IX Series

High-Performance Fixed IP Cameras



IX Series

The high-performance IX Series IP camera is designed to work in a wide variety of enclosures, ideal for both indoor and outdoor applications.

- Sleek design
- Built-in analytics
- Color and Day/Night models
- SureVision

Introducing SureVision 24-Hour Automatic Image Enhancement

Wide dynamic range, low light and anti-bloom technologies overcome various lighting challenges, but only Sarix cameras with SureVision allow these technologies to operate simultaneously. The result is perfect image quality around the clock. Sarix cameras can now automatically adapt to bright light, low light, headlights or any light. SureVision will be available August 2011 for IM Series and IX Series cameras. Experience the ultimate in image enhancement with the new SureVision, only from Pelco by Schneider Electric.



Sarix Cameras

Realizing the Promise of HD VIDEO

ID Series

The ID Series indoor dome leads the industry with innovations and functionality not found in any other indoor megapixel dome camera.

- One-handed installation
- Innovative Auto Back Focus for post-installation focus
- Interchangeable lenses
- Industry's longest optional telephoto dome lens

IE Series

The rugged IE Series environmental dome delivers Sarix technology in the most challenging of environmental conditions.

- Vandal-resistant camera
- High-performance, all-weather IP-based imaging solution
- Certified and rated for outdoor performance



Sarix ID Series
Indoor Dome Camera



Sarix IE Series
Outdoor Dome Camera

High-Resolution, HD, Real-Time Recording

Maximum System Value FOR IP MIGRATION

Flexible Storage Options

These powerful hybrid video recorders provide unparalleled storage choices for systems in this class. With up to 8 terabytes of internal storage available, users no longer have to choose between recording speed and image resolution. And powerful H.264 compression for recorded video minimizes file sizes while optimizing image quality.

Integration Convenience

DX4700 and DX4800 HVRs deliver even more value as part of a larger system. A new DX Series client provides a common interface and operational functionality for DX4700/4800, DX4100, DX4500/4600, DX8000 and DX8100 DVR and HVR systems. Remote PCs can connect to as many as 100 DX systems and view up to 36 images from those units simultaneously. The new client also brings both Windows 7 and Vista support for the entire DX family.

The New Pelco DX4700 and DX4800 hybrid video recorders make it possible for customers to begin a step-by-step migration to megapixel video while still gaining maximum value from their existing analog video surveillance infrastructure.

Available with eight or 16 analog channels – plus support for two additional megapixel cameras of up to 3 Megapixels each – DX4700 and DX4800 offer an unmatched combination of power and performance in a cost-effective package for mid-range applications.



Both models record up to 30 images per second recording on all channels. DX4800 takes it further, with the ability to record full frame rate video at full 4CIF resolution for all cameras. Users enjoy the benefits of megapixel image detail where they need it most, while still getting maximum value from existing analog cameras and cabling.

Powerful Security Tools

Retail, branch office customers and others will benefit from many of the system's robust capabilities, including:

- Ability to capture and overlay ATM/POS text with video recording
- Instant record and playback for quick investigative work
- Bidirectional audio for enhanced security or training purposes



Spectra

LEADING IMAGE QUALITY

The Ultimate POSITIONING SYSTEM

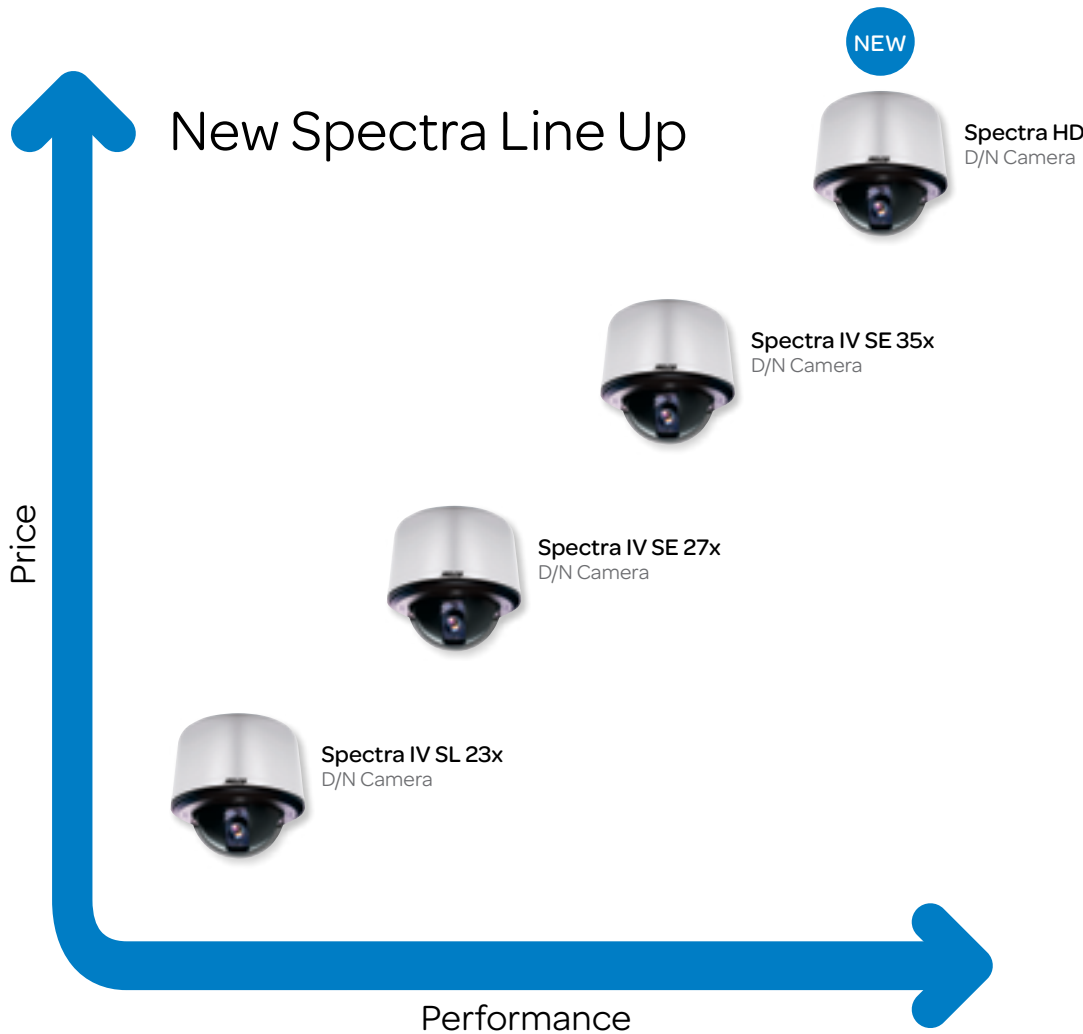
The most prolific and trusted dome positioning system in the industry continues to set the benchmark for excellence. Streamlined to deliver even more value to our customers, the introduction of the Spectra HD, Spectra IV SE and SL Series now gives security professionals a logical choice of positioning systems based on the specific needs of the installation. Coupled with the latest advances in optics technology, the Spectra family delivers uncompromising video quality at a price that cannot be beat.



Spectra IV IP H.264

Spectra IV IP now features H.264 compression for optimized image quality and minimized bandwidth.

- Control and Monitor Video Over IP Networks
- Simultaneous Hybrid IP and Analog Video and Control
- H.264, MPEG-4 and MJPEG Compression



Spectra HD

This all-digital system introduces the industry-leading Sarix technology platform to the Spectra family from 1.3 megapixel resolution, high-profile H.264 compression, built-in analytics, and much more.

Integrated Optics Package: 18x.

Markets: Education, gaming, government, industrial, retail, health care and commercial.

DON'T FORGET: Spectra HD comes standard with the complete suite of Pelco Analytics, including Object Tracking.

Spectra IV SE

Delivering the most accurate color reproduction, unmatched performance in low light and an intelligent algorithm to maintain optimal focus, the Spectra IV SE Series is the very definition of performance and reliability.

Integrated Optics Packages:

Choose from 27x, 35x and 35x Horizon Models.

Markets: City Surveillance, industrial applications, sea ports and marine, transportation and casinos.

DON'T FORGET: Pressurized stainless steel, heavy duty, and vandal resistant models available.

Spectra IV SL

An entry-level camera positioning system ideal for retail, commercial, local government and light industrial applications, the Spectra IV SL 23x quite simply gives you more, for less.

Integrated Optics Package: 23x.

Markets: Retail, commercial, local government and light industrial.

DON'T FORGET: Spectra IV SL comes with a 540TVL camera, Window Blanking, 64 presets and more.



The All-New Camclosure 2

The Perfect Integration OF PERFORMANCE, RELIABILITY & PRICE

Introducing the all-new Camclosure 2 Series integrated camera system, only from Pelco. Featuring Super Dynamic Five (SD5®) image technology, Camclosure 2 delivers unmatched performance and reliability at a remarkably affordable price. With a choice of high-resolution color CCD cameras built into a reliable, easy-to-install system – Camclosure 2 will soon be your video security camera system of choice.

Right out of the box, Camclosure 2 systems come pre-assembled, ready for a quick and reliable installation with a variety of mounting choices. Competitively priced, Camclosure 2 delivers the performance and reliability that will exceed your expectations for a fixed dome, integrated camera system.

From retail to industrial applications, to health care, corrections and education environments, Camclosure 2 units provide crystal-clear video for most any security, surveillance and awareness needs. And, of course, Camclosure 2 systems are backed by the most comprehensive customer support in the video security industry.



Performance Features

- Excellent image detail and color reproduction
- High-resolution, high-sensitivity image processing (up to 0.3 lux)
- Choose from three powerful camera options (up to 650 TV lines typical color mode. Up to 700 TV lines B/W mode)
- 12 VDC or 24 VAC operation, autosensing
- Manual, 3-axis (pan/tilt/rotation) positioning
- Service connector for video output
- Available in surface or flush mount models, and with smoked or clear domes
- Varifocal lens

Adaptive Black Stretch

(Adaptive Black Stretch) ABS increases the visibility of subjects in dark areas without degrading image quality in bright areas.

Auto Back Focus

The (Auto Back Focus) ABF feature in some models automatically adjusts the back focus required for clear, sharp images — greatly reducing installation time.

Video Motion Detection

Available in select models, the high-resolution detection area and advanced motion detection algorithm available in Camclosure 2, enables very accurate and reliable motion detection.

Super Dynamic and SD5 are registered trademarks of Panasonic Corporation.

Pelco Intelligent Video Analytics

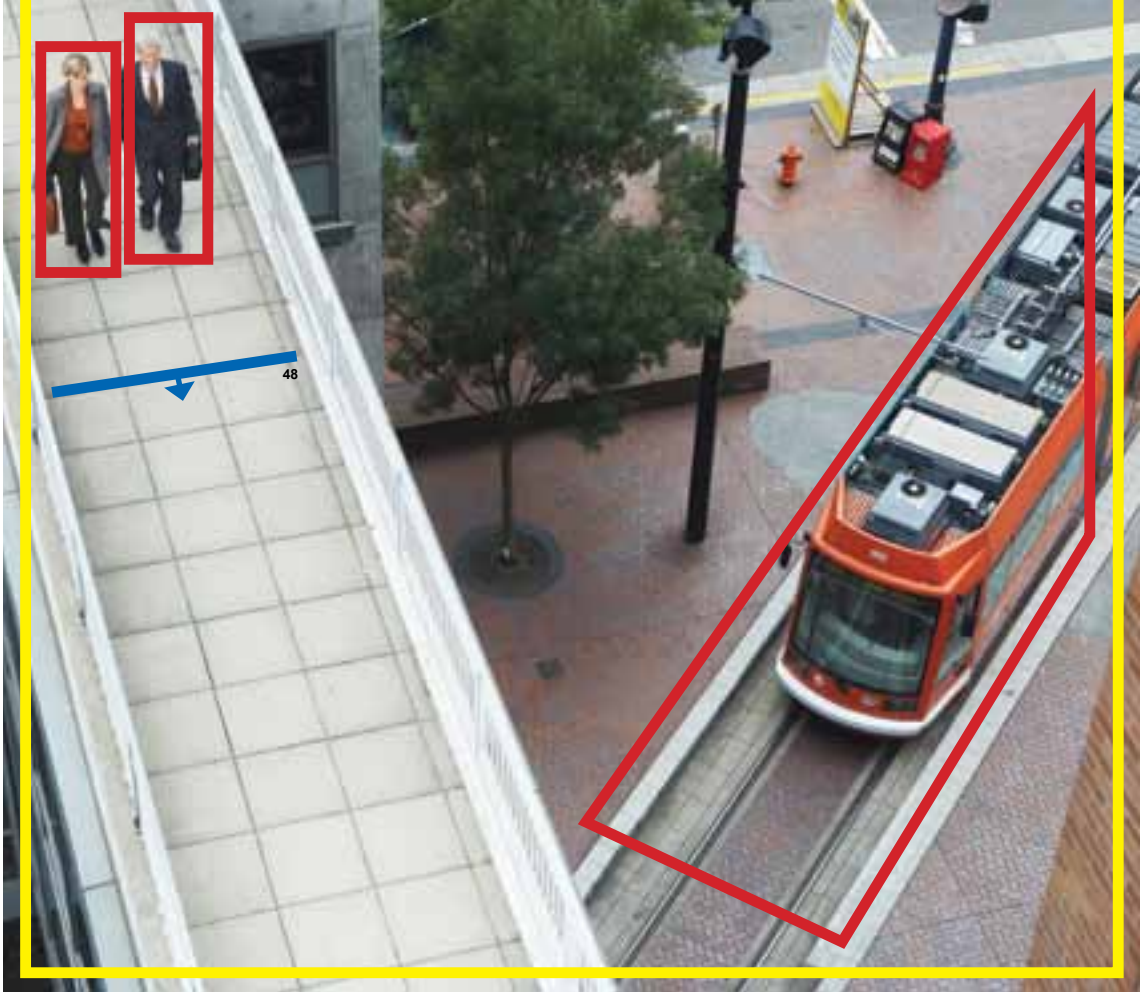
ENHANCING SECURITY WITH TECHNOLOGY

Pelco Video Analytics Highlights

- Camera Sabotage analytic
- Pelco Motion Suite analytics
 - Adaptive Motion
 - Directional Motion
- Pelco Object Suite analytics
 - Abandoned Object
 - Object Counting
 - Object Removal
- Improves operator efficiency
- Real-time alarm and event notification
- Open API for alarms and configuration
- Multiple analytic profiles

Few new technologies have excited the imagination of video security professionals like video analytics. Through constant automated digital screening and filtering, video analytics can identify specific conditions and notify operators of potential issues, allowing security officials to make quick, informed decisions.

Pelco engineers have developed numerous video analytics features to track various behaviors – from recognizing an abandoned briefcase or duffel bag to determining when someone is loitering in a specified zone. Ultimately, video analytics can help customers save money and operate more efficiently. Think of it in terms of operating expenses and bringing more value to the business by using object counting to see how many people are coming in to a retail establishment at certain times of day. The business can then better determine how many employees need to be staffed at those times and in what areas they're most productive.



Pelco analytics packages are included with Spectra HD pan/tilt/zoom cameras, Sarix EP fixed cameras and NET5400 Series encoders at no extra charge. Pelco analytics work with the Pelco Endura system. For customers with third-party, OV Ready systems, Pelco also offers an OV analytics suite in its Sarix EP cameras with comparable behaviors.

Pelco Video Analytics Behaviors

	NET5400 Series Encoder	Spectra™ HD PTZ Cameras	Sarix™ EP Fixed Cameras	Sarix™ Fixed Cameras
Vibration Removal	●			
Adaptive Motion	●	●	●	
Abandoned Object	●	●	●	
Object Removal	●	●	●	
Camera Sabotage	●	●	●	●
Directional Motion	●	●	●	
Object Counting	●	●	●	
Loitering Detection		●	●	
Stopped Vehicle		●	●	
Auto Tracking		●		



Narrow Bezel LCD Monitors

SEE THE BIGGER PICTURE

Combining full high-definition 1920 x 1080p resolution with edges that range from just 9.6 mm to 17.4 mm, new Pelco Narrow Bezel Series LCD monitors are the perfect viewing solution for any control room. The monitors can be tiled together easily to create a virtually seamless video wall.

Available in 42-, 46- and 55- inch models, these large format displays adapt to the changing nature of security in control room design and efficiency. Individual monitors, as well as entire walls, can be configured to meet individual security needs and multiple video streams can be arranged on a single monitor to significantly reduce an installation's power requirements.

Embedded handles, lightweight design and a variety of mounts make installation easy, while Energy Star certification enables customers to save money and energy. Narrow Bezel Series monitors deliver optimal performance and the truest color reproduction available-resulting in a better visual experience that provides the high- definition video needed to make important decisions.

Pelco LED-Backlit Monitors

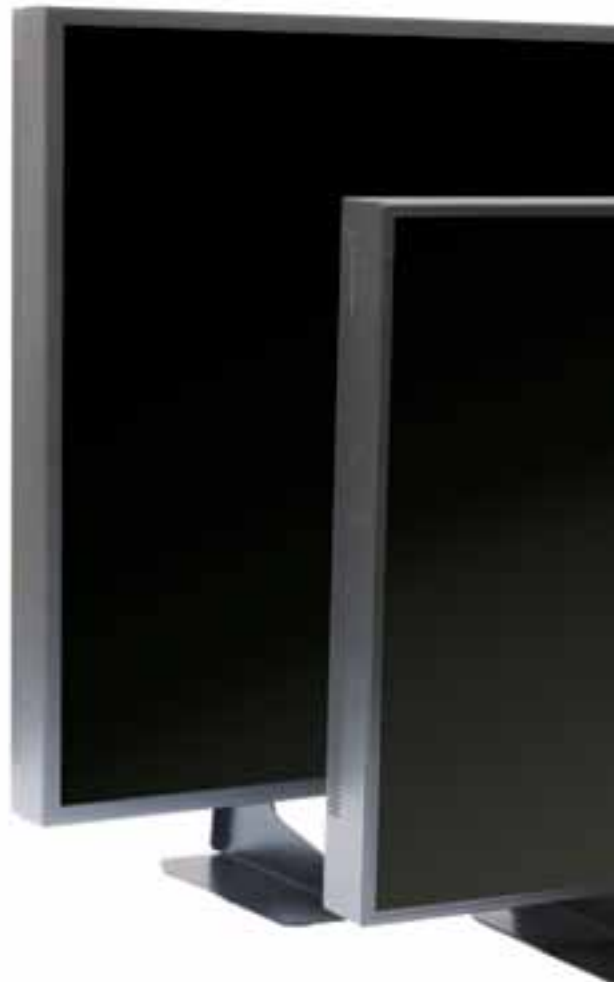
THE SMARTER CHOICE

Better performance, greater dynamic contrast and lower energy use make Pelco LED-backlit monitors a smarter choice for control rooms and desktops alike. These new monitors incorporate Pelco quality with the use of LED backlighting, rather than the cold cathode fluorescent lights (CCFL) used in most other monitors.

The result is better contrast levels and picture quality, which is imperative when making important security decisions. Additionally, the use of LED backlighting dramatically lowers power consumption and heat dissipation making for a more reliable, efficient monitor that can be housed in a slimmer package.

Pelco LED-backlit monitors will be available in a variety of sizes including 17-, 19-, 24-, 32- and 42-inch models. The monitors are Energy Star certified, enabling customers to save money and energy in their installations while getting the views that allow them to maximize their investment in megapixel cameras.

The introduction of LCD monitors using LED technology marks a first for Pelco and is a direct reflection of our commitment to provide the latest technologies in a package that's both affordable and reliable for the security industry. With these new monitors, Pelco continues to offer the industry's most complete line of high-resolution 1080p monitors.



Digital Sentry Software-Only SOLUTIONS

Free Recording. Unlimited Possibilities.

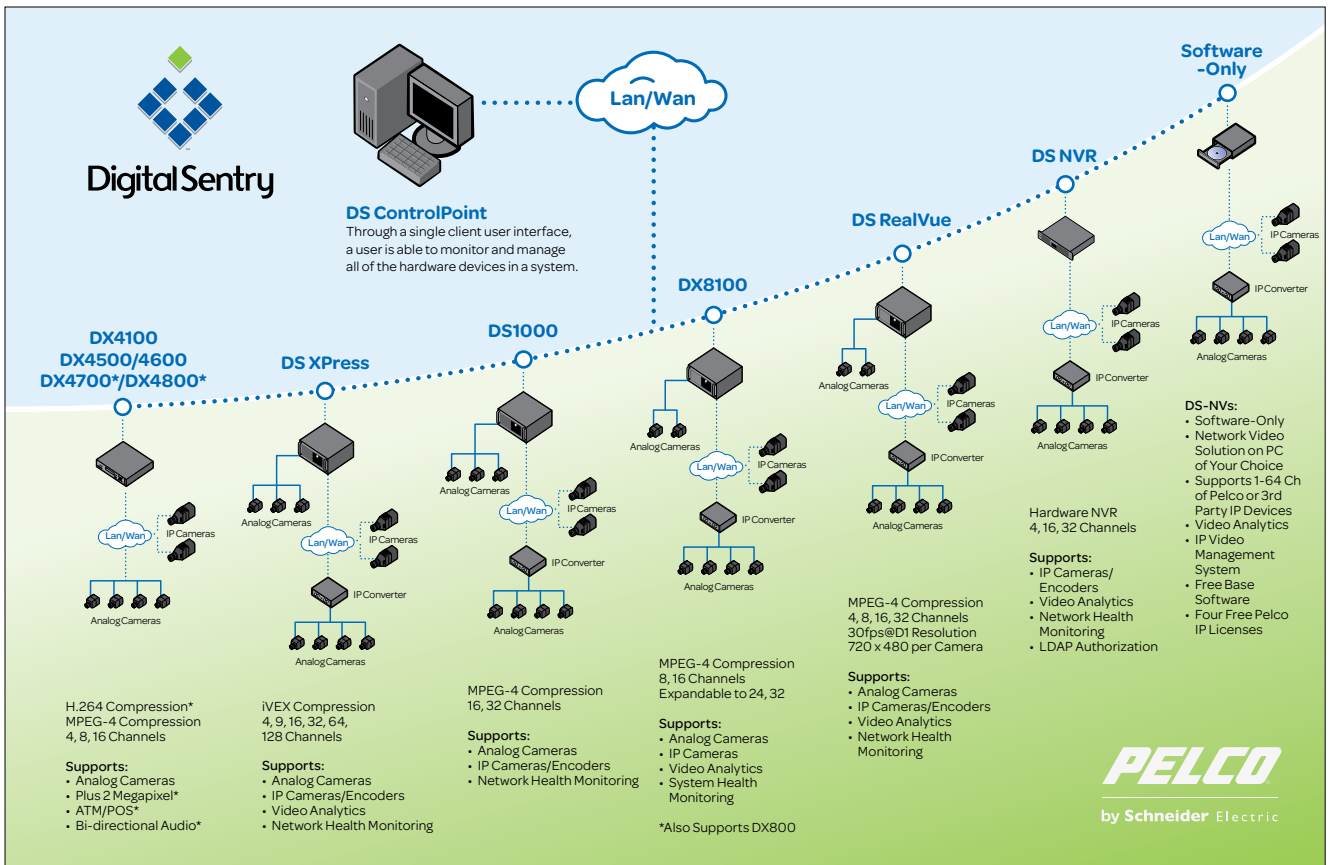
Powerful, flexible and absolutely free, DS4U is the four-channel, software-only recording solution that is included with every Pelco IP camera.

- Manage and record four Pelco IP cameras
- Upgrade to as many as 64 channels of Pelco IP or third-party IP camera systems
- Supports standard-definition (SD) and high-definition (HD) cameras

DS4U and DS-NVs are Pelco's software-only high-definition video management solutions. Open for both Pelco and third-party cameras, DS4U and DS-NVs enable security professionals to leverage existing hardware platforms while realizing the performance of high-definition video.

For customers who are looking for a software-only solution, Digital Sentry provides IT-focused solutions that allow for the recording and display of exceptionally high-quality video.





*Digital Sentry assures backward compatibility for this legacy product.

DX4100 Series DVRs

These affordable, entry-level four-channel DVRs offer internal storage capability of up to 2 TB. These systems feature simple installation, are ready to record right out of the box and have an easy-to-use and intuitive user interface which makes training and support easy.

DX4500 & DX4600 Series DVRs

With remote and Web client capabilities to simultaneously view and operate as many as 16 DX4500/DX4600 DVRs at a time, customers can gain maximum value from this robust, entry-level system. Now with analog keyboard support for ease of PTZ control, the DX4500/DX4600 family delivers more value than ever before.

DX4700 & 4800 Series HVRs

With eight or 16 analog channels plus support for two megapixel cameras, DX4700/4800 users can gain the benefits of extra image detail where they need it most, while still leveraging their existing cameras and cabling. Full frame rate recording and up to 8TB internal storage means never having to choose between image quality and recording speed.

DX8100 Series HVRs

With the ability to record either analog or IP network cameras, the DX8100 Series hybrid video recorders provide our broadest range of features, including robust search methods, immense storage capacity, audio recording options on each channel and server-to-server connectivity.

Digital Sentry is Software

Whether your application demands the robustness of purpose-built hardware or is taking advantage of industry-standard platforms from suppliers like Dell, IBM or HP, Pelco and Digital Sentry give you the power to view live and recorded video, control cameras, export video and much more.

DS ControlPoint

DS ControlPoint interfaces with all DS video management system software – and with DX systems – to enable seamless and progressive migration from analog to IP environments. With support for multi-monitor navigation and control, and an easy-to-navigate tabbed environment, critical data can be accessed, monitored or managed from multiple locations.



ExSite IP Explosionproof Positioning

Security in the
EXTREME

Representing a breakthrough in surveillance and video monitoring technology, ExSite IP systems meet the most rigorous hazardous location certifications with state-of-the-art integration, control and programmability. Offering unparalleled performance in areas where explosive conditions exist at all times, ExSite is the choice for the oil, gas and chemical industries' most critical process monitoring requirements.

Total Integration

Right out of the box, ExSite systems are ready for installation – it's quick, it's easy. Through the complete integration of all components, ExSite systems have been specifically engineered to install in a fraction of the time that traditional systems require. ExSite systems offer:

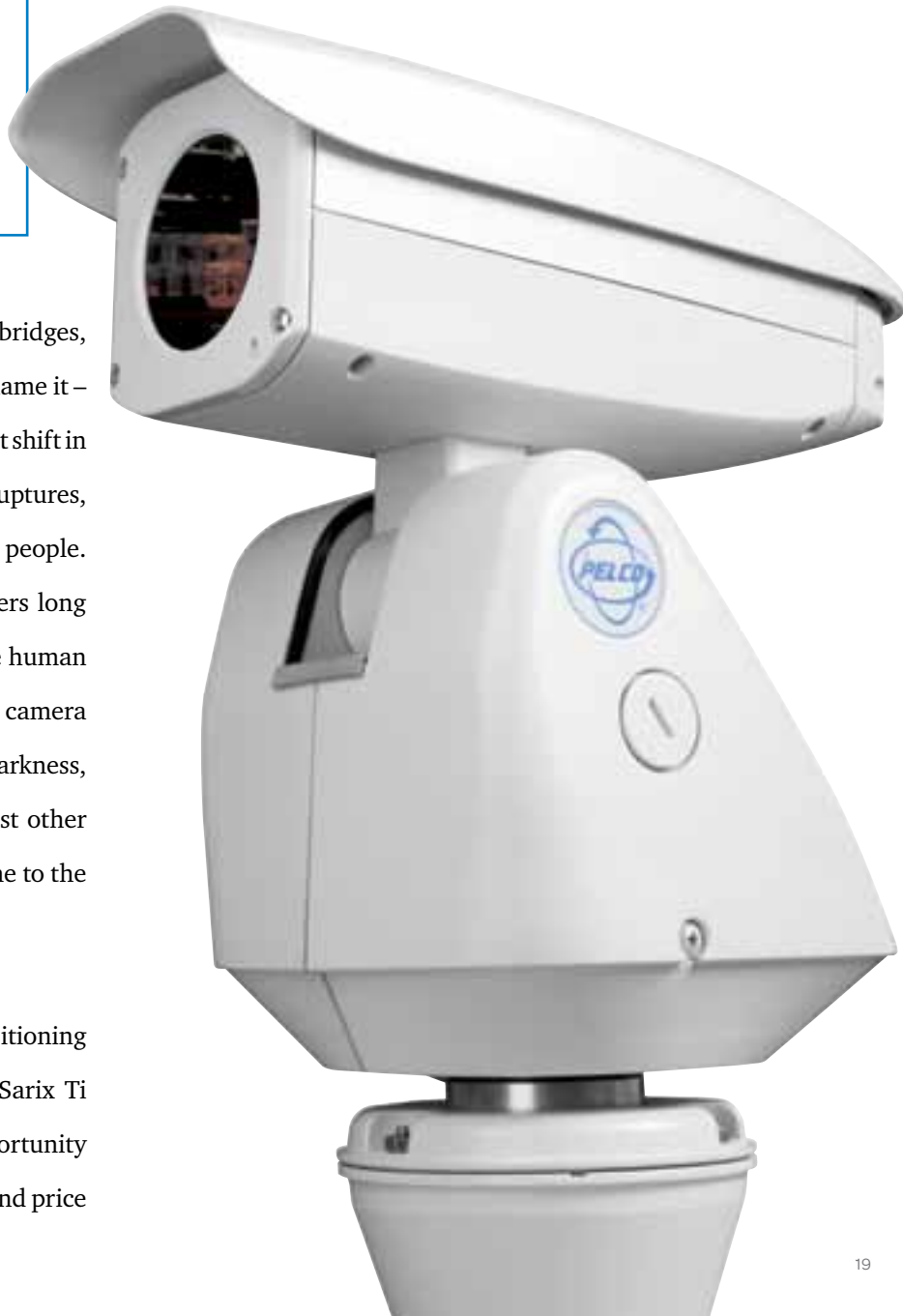
- PTZ and fixed-position models
- Fully integrated camera and lens options
- Remote data capability
- Fiber optic and UTP compatible
- Upright or inverted operation
- Window wiper and non-wiper versions
- All-316L stainless steel construction

Introducing Sarix Ti Thermal Imaging

Thermal Imaging with Sarix Technology

- Higher resolution
- Better sensitivity
- Advanced analytics
- Amazingly affordable
- Seamless DVR, HVR and VMS integration

NOW THERE'S REALLY NOWHERE TO HIDE



Imagine looking at any structure – bridges, dams, power plants, platforms, you name it – and being able to see even the slightest shift in temperature. Instantly spot leaks, ruptures, fractures, hot spots, animals or people. Imagine being able to detect intruders long before standard cameras or even the human eye could see them. Imagine a camera system that can see through total darkness, through fog, smoke, foliage and most other obstructions, indoors or out. Welcome to the world of Sarix Ti thermal imaging.

By combining the best in PTZ positioning with the best in image processing, Sarix Ti delivers an amazing new security opportunity — all at a new level of performance and price previously unimagined.

The Power of Partnership

Energize Your Business with the New Partner Advantage Program



Business is rapidly evolving.
We'll help you gain the advantage.

- Stand out in the marketplace.
- Deliver the solutions your customers demand.
- Grow your staff's sales and technical skills.

Because Pelco by Schneider Electric is committed to your success, we've created a new program that provides every possible advantage to grow your business and increase your profits. Designed to support and reward you, our valued dealers and integrators, the Partner Advantage Program will help you use product knowledge and expertise to differentiate yourself from the competition.

Partner Advantage is structured to align partners into one of four tiers (Platinum, Gold, Silver and Registered) based on specific criteria. Everyone saves with the Partner Advantage program since discounts are available at every tier. As a Partner, you will also have access to the highest levels of support, the latest product information, reserved training opportunities and much more.

Do not miss this opportunity to give your business the advantage it deserves. Discover the rewards waiting for you by visiting www.pelco.com/partneradvantage.

C5055B - 04/11

PELCO

by Schneider Electric

Pelco, Inc. Worldwide Headquarters 3500 Pelco Way Clovis, California 93612 USA
(800) 289-9100 (800) 289-9150 Fax +1 (559) 292-1981 International +1 (559) 348-1120 International Fax

Worldwide Locations: Australia Brazil Canada China Colombia Czech Republic Finland France Germany
Italy Japan Korea Macau Mexico The Netherlands Panama Poland Puerto Rico Russia Singapore Slovakia
South Africa Spain Sweden Taiwan United Arab Emirates United Kingdom United States Venezuela

Features and specifications subject to change without notice.
©Copyright 2011, Pelco, Inc. All rights reserved.